

RENEGADE WARRANTY

Renegade MY 2021 motorhomes are covered by a 1-year unlimited miles limited warranty, plus a 3-year 36,000-mile limited structural warranty.

All Renegade motorhome chassis, engines and transmissions, and drivetrain warranties are provided and administered by their respective manufactures. For specific information about these warranties, ask your dealer or contact Renegade RV.



Renegade
RV
REVGROUP

Confidence to go anywhere

52216 SR 15 Bristol, IN 46507
888.522.1126 | RenegadeRV.com

Features and options may vary from descriptions without notice.

SPORT•TRUCKRV

(866) 570-1465

www.SportTruckRV.com

Renegade
RV

REV GROUP

Confidence to go anywhere



CLASSIC 2021

EXTREME LUXURY | EXTREME PURPOSE | EXTREME DURABILITY





Renegade CLASSIC

The Renegade Classic lets you define your journey on your terms. The ultimate motorcoach is built to your specifications, providing you the versatility to choose from multiple different floorplans, colors, paint schemes, upgraded insulation, chassis options, and more. Your adventures are just beginning with the Renegade Classic motorhome.



Featured to the left:

Shown here is the Classic 38CSB with Woodstock cabinetry featuring Epic style doors and optional hardwood valances. The optional honed tile floor and the standard spacious fiberglass shower give this Classic a warm touch. This Classic bedroom design in this plan allows for a rear window to open up the interior and the 7' 6" ceiling allows for the optional ceiling fan – a favorite among Classic owners.

THE *Renegade* CLASSIC AT A GLANCE

Exterior height **13'5"**
Exterior width **100 $\frac{1}{4}$ "**
Exterior length **37' - 45'**

Interior height **90"**
Interior width **95"**
Fuel capacity **120 Gallons**

Fresh water capacity **150 Gallons**
Grey water capacity **75 Gallons**
Black water capacity **75 Gallons**

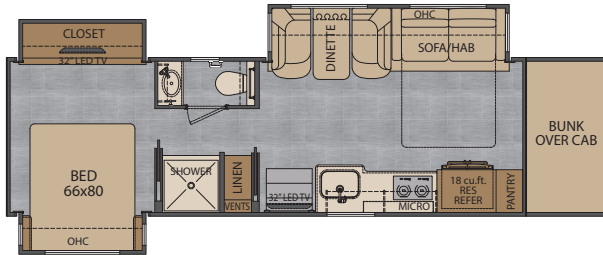


KEY FEATURES

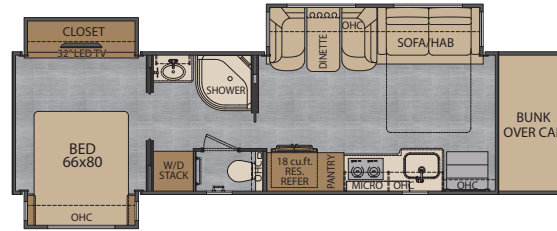
- 500-605 HP with several transmission options
- Optional multiplex system with color touch panel & Bluetooth app control
- Solid hardwood cabinets
- AquaHot 450 system
- Multiple chassis choices
- 15 standard floorplan options
- Up to 30,000 lbs towing capacity
- Multiple insulation choices available

Renegade CLASSIC

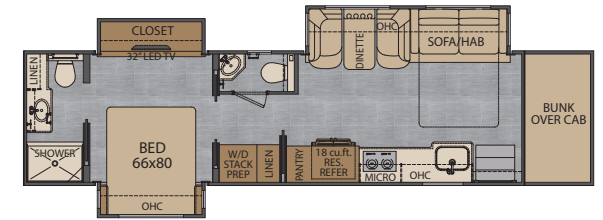
FLOOR PLAN OPTIONS



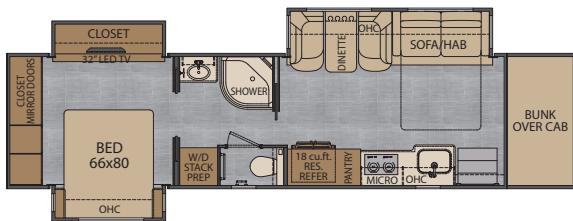
37CTS 37' mid bath, 3 slides



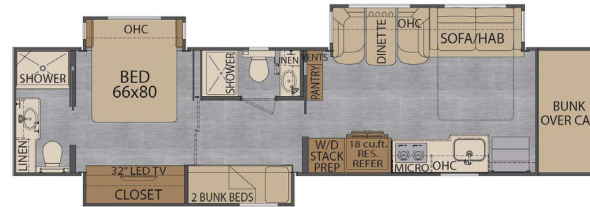
38CSB 38' mid bath, 3 slides



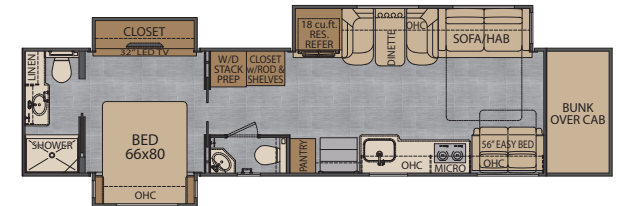
41CRB 41' mid and rear bath, 3 slides



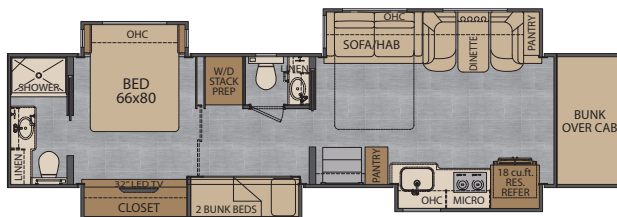
41CRW 41' mid bath, 3 slides



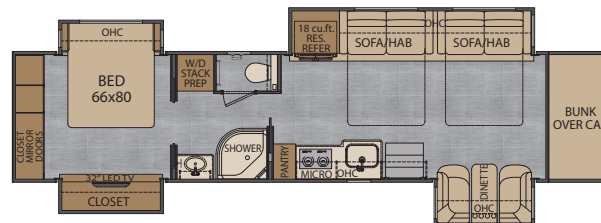
45CBF 45' mid and rear bath, 3 slides



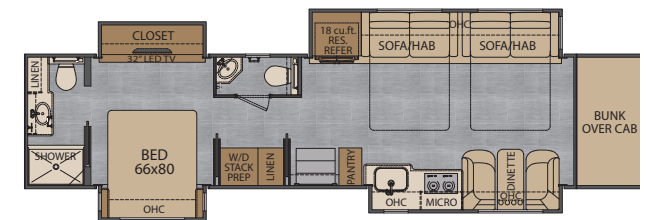
45CBH 45' mid and rear bath, 3 slides



45CBQ 45' mid and rear bath, 4 slides



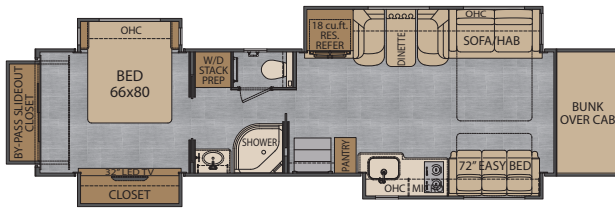
45CMB 45' mid bath, 4 slides



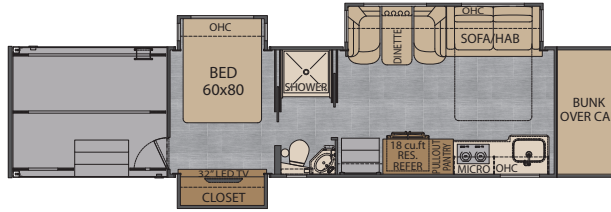
45CMR 45' mid and rear bath, 4 slides

Renegade CLASSIC

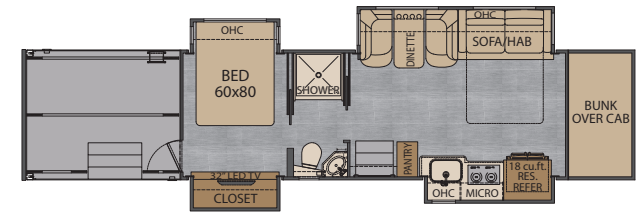
FLOOR PLAN OPTIONS



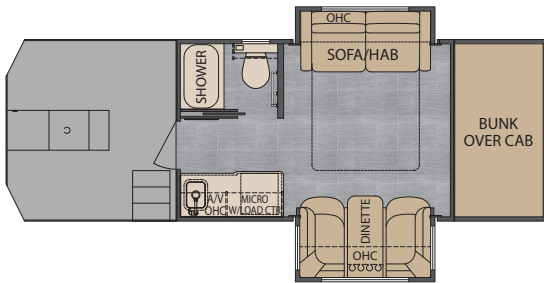
45CRS 45' mid bath, 5 slides



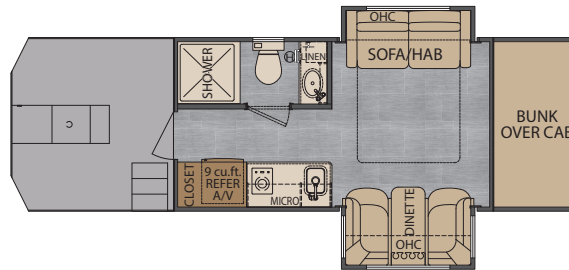
2509 Mid bath, 3 slides



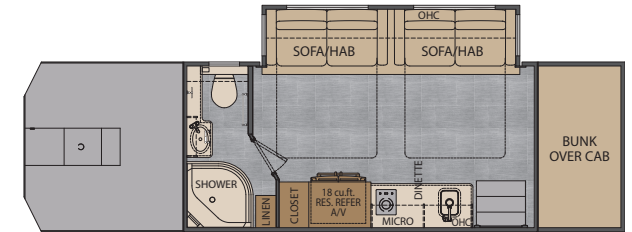
2509GS Mid bath, 3 slides



CS120 Bath, 2 slides



CS150 Bath, 2 slides



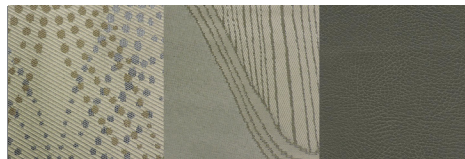
DL170 Rear bath, 1 slide

Renegade CLASSIC

INTERIOR DÉCOR OPTIONS



TITANIUM



WARM JAVA



HARVEST SUNSET



WATERFALL

CAB/CHASSIS

Freightliner Cascadia, Volvo VNR/VNL, or Peterbilt 567 chassis with product specific engine and transmission options and specifications
Polished aluminum wheels with center caps
Air ride rear suspension system
All wheel air disc brakes with ABS
3 stage engine compression brake
Air ride driver and passenger seats with heat, adjustable armrests, and recliners
Power windows and door locks
Electronic cruise control
Power/heated remote control mirrors
Tilt and telescoping steering wheel
Premium sound and thermal insulation package
Removable automotive cab floor liner w/matching floor mats
Flip forward hood assembly for fast & easy service access

CONSTRUCTION

5/8" FRP roof and exterior walls (2 3/8" total wall thickness), insulation and interior wallboard
"Super Sandwich" floor construction w/ galvanized vapor barrier includes:

- 3/4" fir plywood deck over 2 x 4 wood-framed residential floor
- 2" welded steel floor joist system
- Mounted to 6" steel longitudinal floor beams
- 3.5" premium grade sound deadening and thermal insulation in Floor

ELECTRICAL SYSTEMS

12.5KW Onan quiet diesel generator (coaches 40' and over)
8KW Onan quiet diesel generator (coaches under 40')
3000 watt hybrid inverter
8D AGM house batteries
Automatic generator start system
Solar charging system pre-wire
Central command center cabinet
50 amp electrical panel
12V holding tank heaters, grey & black tanks
GFI receptacle and circuit in baggage compartment
Dual 12V dash outlets
Power retract 50 amp power cord reel
Inverted 110V and USB outlets

EXTERIOR

Powder-coated steel storage compartments
Side-hinged baggage doors w/ strut assist & black paddle latches
Keyless entry door touchpad lock & remote locking/unlocking baggage doors
Radius RV entrance door w/screen and deadbolt
Lateral arm awning with electric lights
Aluminum wrapped auto deploy/retract awnings over all slide outs
Frameless dual pane tinted windows with tilt-opening
20,000 lb. hitch, 7 way tow connector w/ 3" insert (single axle)
30,000 lb. hitch, 7 way tow connector w/ 2 5/16" insert (tandem axle)
Equalizer fully automatic 4 point hydraulic leveling system
FRP cabover front w/48" cab bunk
Fiberglass molded tank covers & entry steps (Freightliner & Volvo only)
Full box undercoating

INTERIOR

Ultraleather seating fabric
Williamsburg sofa w/ queen hide-a-bed sleeper
Vinyl flooring throughout
Soft close full extension ball bearing drawer guides throughout
Pull-out style pantry (per floorplan)
Polished solid surface countertops
Stainless steel kitchen sink with removable polished solid surface covers (choice of single or double bowl style)
Tile galley backsplash
Satin nickel single handle kitchen faucet with pull-out sprayer
Hardwood slide-out box trim moldings and corner blocks
Hardwood window valances w/fabric accents
Designer comforter w/ pillows and shams
Bedroom nightstands with solid surface tops (per floorplan)
iRelax memory foam mattress
Wood-framed full length wall mirror in bedroom
Wardrobe with dresser drawers
Dovetail drawer construction

BATH

Color coordinated fiberglass shower with glass door
12V high capacity on demand water pump variable flow
Polished solid surface countertop with stainless steel sinks
Satin nickel bath faucet & adjustable shower head
Porcelain macerator toilet w/push button

APPLIANCES

18 cu. ft. french door residential refer w/ stainless steel doors
Recessed 3-burner gas cooktop w/solid surface cover
Stainless steel convection microwave oven
24.2 gal propane tank w/ regulator and gauge
10 gallon 110 volt/propane water heater
(2 or 3) 15,000 BTU low profile roof A/C w/heat pumps & chill
Grill-ducted (varies by floorplan and gen size)
35,000 btu SFQ series propane furnace
Pre-wired & plumbed for optional washer/dryer (N/A 37CTS)

ENTERTAINMENT SYSTEM

Premium touch screen dash radio with bluetooth & integrated color monitor (chassis specific)
Cab sound system upgrade - speakers, amp, and subwoofer (Cascadia only)
Color rear and side view cameras
Integrated GPS with RV navigation maps (N/A all chassis)
Soundbar home theater w/ subwoofer and bluRay in living room and bedroom
Samsung 32" LED 4K HDTV bedroom & living area
Winegard Mission RT4035T In-Motion satellite dish
Prewire for Trav'ler stationary HD satellite system
Winegard connect 2.0 rooftop OTA antenna w/WiFi and 4G ready*
*(Requires customer subscription)
*(Satellite control box(s) not included)

POPULAR OPTIONS

Underbody LED lighting
Interior under counter & toe kick LED lighting
Exterior 12v scene lighting-bright LED
High gloss 90 sheen finish on cabinets
Aero Cap w/ fixed bunk or walkthrough features
Exterior refer/freezer on slide tray (floorplan specific)
Steel storage compartments with bed-liner
Custom coach paint
Various awning options from Girard and ZipDee
Outside entertainment center w 32" TV or upgrade 43" TV
Powered theatre seats
Polished/honed porcelain tile ILO Vinyl flooring
Heated floors
2 burner induction cooktop ILO gas cooktop
Washer/Dryer Stack or Combo
Manual or motorized TV slide at bunk
AquaHot 450 system