

RENEGADE WARRANTY

Renegade MY 2021 motorhomes are covered by a 3-year unlimited miles limited warranty, plus a 5-year 50,000-mile limited structural warranty.

All Renegade motorhome chassis, engines and transmissions, and drivetrain warranties are provided and administered by their respective manufactures. For specific information about these warranties, ask your dealer or contact Renegade RV.



Renegade
RV
REVGROUP

Confidence to go anywhere

52216 SR 15 Bristol, IN 46507
888.522.1126 | RenegadeRV.com

Features and options may vary from descriptions without notice.

SPORT•TRUCKRV

(866) 570-1465

www.SportTruckRV.com

IKON

2021

EXTREME LUXURY | EXTREME PURPOSE | EXTREME DURABILITY



Renegade
RV
REVGROUP
Confidence to go anywhere





Renegade IKON

The Ikon is a luxuriously expansive and powerful, Diesel motor home. As Renegade's flagship product it is based on a Freightliner or Volvo chassis and is unprecedented in its design and features. A tiled galley backsplash, premium hardwood cabinets and polished porcelain tile flooring throughout are just some of the high-end features you will find in the Renegade Ikon. You can relax in style when you travel in the Renegade Ikon.

Featured to the left:

The IKON shown here in Moonstone Décor with Burnished Sable cabinet stain and Ultrafabrics Brisa seating surfaces. Samsung brand appliances and electronics plus Bose sound systems are standard. The (72" x 80') king bed, standard with a memory foam mattress, is available with an optional Sleep Number mattress. The extra-large solid surface IKON shower compliments the spacious rear bath outfitted with polished premium solid surface vanity top and storage doors and drawers.

THE *Renegade* IKON AT A GLANCE

Exterior height **13'5"**
Exterior width **102"**
Exterior length **45'**

Interior height **90"**
Interior width **95"**
Fuel capacity **120 Gallons**

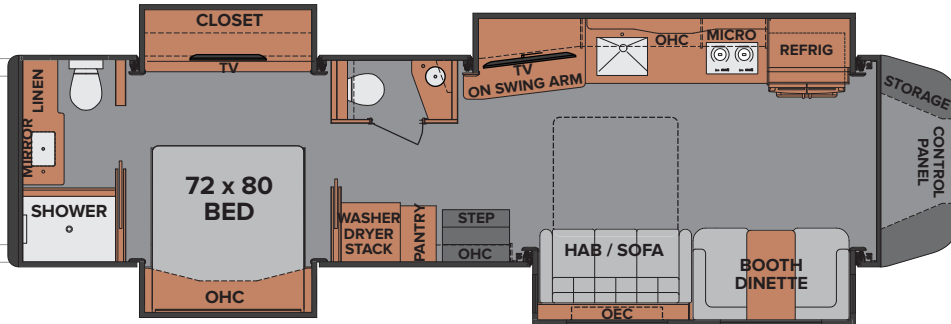
Fresh water capacity **150 Gallons**
Grey water capacity **75 Gallons**
Black water capacity **75 Gallons**



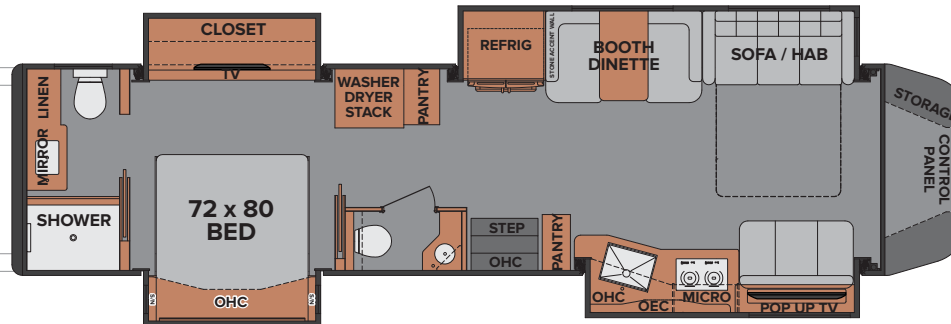
KEY FEATURES

- 500 - 600 HP engine (Chassis specific)
- Garmin control system with GPS
- Solid hardwood cabinets
- 4 HWH hydraulic flush slides
- Dual 3000watt hybrid inverters
- Sound deadening thermal barrier floor insulation
- AquaHot 600D Hydronic
- Up to 30,000 lbs towing capacity
- Bus style power entry steps and stepwell cover

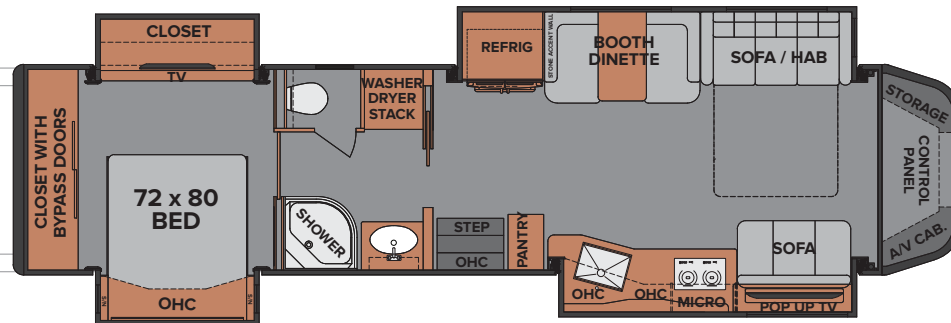
i4534RQ
4 slide with mid half bath & rear full bath



i4534RX
4 slide with mid half bath & rear full bath



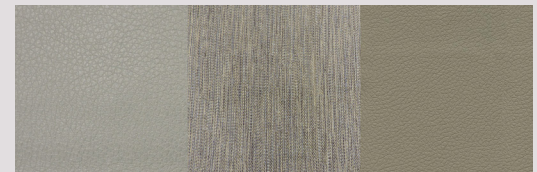
i4534MM
4 slide with mid bath



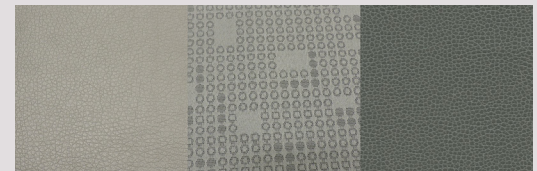
MOONSTONE



PEARL



SAPPHIRE



STERLING



TOPAZ



BLAZE



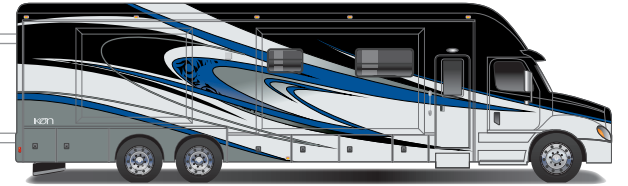
MAHOGANY



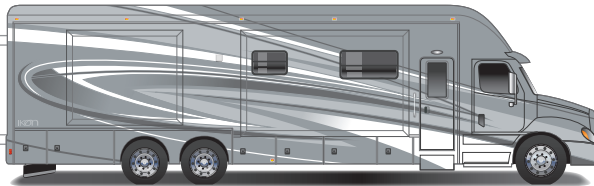
CRANBERRY



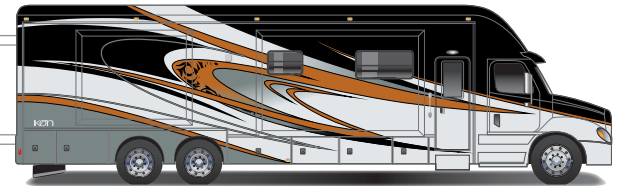
OCEAN



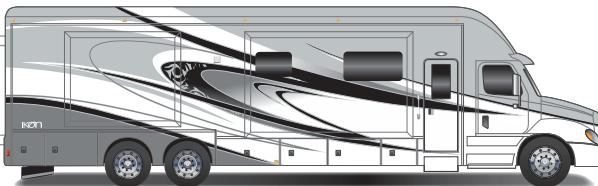
FROST



SALSA



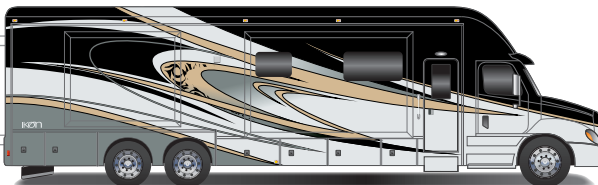
GLACIER



SAPPHIRE



LUNAR



SEASIDE



CAB/CHASSIS

Freightliner Cascadia or Volvo VNL chassis with product specific engine and transmission options and specifications
 Polished aluminum wheels with center caps (polished wheels on outside rear duals only)
 Air ride rear suspension system
 All wheel air disc brakes with ABS
 3 stage engine compression brake
 Air ride driver and passenger seats with heat, adjustable armrests, and recliners
 Power windows and door locks
 Electronic cruise control
 Power/heated remote control mirrors
 Tilt and telescoping steering wheel
 Premium sound and thermal insulation package
 Fog lights Integrated into front bumper
 Removable automotive cab floor liner w/matching floor mats
 Fiberglass molded tank covers and entry steps

CONSTRUCTION

2 3/8" vacuum laminated sidewalls w/ welded tubular aluminum framing
 2" high density foam insulation in sidewalls & 1 1/2" in roof
 Welded aluminum framed wall cutouts
 Welded tubular aluminum roof truss system w/ framed cutouts
 One piece crowned fiberglass roof surface
 "Super Sandwich" floor construction w/ galvanized vapor barrier includes:

- 3/4" fir plywood deck over 2 x 4 wood-framed residential floor
- 2" Welded steel floor joist system
- Mounted to 6" steel longitudinal floor beams
- 3.5" premium grade sound deadening and thermal insulation in floor

ELECTRICAL SYSTEMS

12.5KW Onan quiet diesel generator
 Dual 3,000 Victron inverters-stacked
 (3) 8D AGM house batteries
 Automatic generator start system
 Solar charging system pre-wire
 Central command center cabinet
 50 amp electrical panel
 Deluxe LED lighting with Garmin Multiplex electrical system
 Exterior GFI receptacle and circuit
 Dual 12V dash outlets
 USB/110V charging outlets
 Power retract 50 amp power cord reel

EXTERIOR

Powder-coated steel storage compartments w/bed liner
 Side-hinged baggage doors w/ strut assist & chrome paddle latches
 Keyless entry door touchpad lock and remote locking/unlocking baggage doors
 Full Length, integrated ZipDee lateral arm awning w/wind sensor and LED lights.
 Frameless dual pane tinted windows with tilt-opening design
 30,000 lb. hitch, 7 way tow connector
 HWH hydraulic slide-out system W/4-flush fit slide-out rooms
 HWH Sweepez water/debris removal system slide topper
 HWH automatic 4 point hydraulic leveling system
 Heavy duty electric double entry step
 Aerodynamic fiberglass front and rear caps & transition
 LED brake, turn & high mount brake lights
 LED docking lights, sides and rear of coach
 Bright stainless steel inserts on rear cap
 Diamond Shield frontal protection

INTERIOR

Ultraleather seating package
 Villa sofa with queen size air mattress hide-a-bed sleeper
 Villa dinette seating, solid surface dinette table
 Pull out storage drawers under dinette booth seats
 Polished porcelain tile flooring throughout
 Solid hardwood cabinets with urban style doors
 Dovetail drawer construction
 Stacked silverware drawer in galley
 Satin nickel cabinet door and drawer pulls
 Pull-out style pantry with adjustable shelves
 Premium polished solid surface countertops throughout
 Stainless steel kitchen sink with removable polished solid surface covers
 Tile galley backsplash
 Hardwood slide-out box trim moldings and corner blocks w/ soft touch vinyl inserts
 Hardwood decorative ceiling trim package w/diffused lighting
 Designer comforter w/ pillows and shams
 Bedroom dresser & nightstand with solid surface tops
 OrthoRest mattress (72" x 80" king)
 Wood-framed full length wall mirror in bedroom
 Full length wardrobe with dresser drawers
 Powered, electric entry step well cover
 LED floor level lighting throughout
 Energy efficient LED flush mount ceiling lighting throughout
 Soft touch window valances w/accent

BATH

Solid surface shower surround w/ glass door and tile accents
 Stainless steel and teak fold down shower seat
 Stainless steel rain shower system w/ body sprays and shower wand
 Custom LED backlit-edge vanity mirror
 Porcelain electric macerator toilet w/push button
 Flo jet macerator
 Power water reel
 2 heat strips on each waste tank

APPLIANCES

22CFT french door residential refer w/ stainless steel doors and ice maker
 Recessed 2-burner electric induction cooktop with solid surface covers
 Stainless steel convection microwave oven
 (3) 15,000 BTU low profile roof A/C w/heat pumps & condensation drains
 Ducted air conditioning
 LP/CO & smoke detectors, fire extinguisher
 Stackable washer and dryer
 600D AquaHot hydronic heating system with engine pre-heat
 Winterization kit

ENTERTAINMENT SYSTEM

Premium Bluetooth touch screen dash radio
 Xite driving camera system w/360 degree viewing on fixed display
 Sirius/XM satellite ready (requires customer subscription)
 Soundbar home theater w/ subwoofer and BluRay 50" 4K Smart LED TV in living area
 Outside ent. ctr. w/ 40" 4K LED TV, soundbar & USB charging
 40" 4K Smart LED TV w/BluRay/DVD player in bedroom
 Winegard HD stationary satellite system (receiver not included)
 Prewire for In-Motion satellite system
 Winegard Connect 2.0 rooftop OTA antenna w/WiFi and 4G ready (SIM card req. Satellite control box(s) not included. Requires customer subscription.)

POPULAR OPTIONS

Winegard in motion satellite
 30,000# ball mount insert w/ 2 5/16" ball
 Premium high capacity lithium battery upgrade pkg.
 Underbody LED lights (single color or color changing options available)
 Sleep Number R5 bed ILO standard
 4 solar panels