

LEGENDARY RENEGADE QUALITY - VERONA

# VERONA

LEGENDARY RENEGADE LUXURY AND QUALITY



DESIGNED FOR <sup>YOUR</sup> LIFE





The expansive kitchen of the 40VBH delivers unmatched functionality and storage. Solid Maple cabinets feature soft closing drawers, hidden hinges, and satin nickel hardware, topped with polished solid surface countertops and stone backsplash. Standard Stainless Steel appliances include an over-the range convection microwave, sealed and recessed 3 burner LP cooktop, and a Samsung 18 cu. ft. French Door refrigerator with icemaker and pull-out drawer freezer. 40VBH Shown in Café Décor.





Spacious and Inviting with a classic flair that never goes out of style, Verona comes with ultra-soft touch furniture, Maple hardwood cabinetry, and polished solid surface countertops. Verona 40VBH is shown in Twilight Décor.





A. 40VBH Cafe Decor



B. 40VRB Twilight Decor

## VERONA LIVING SPACES

Designed for today's active families, every Verona has an impressive collection of the must-have features that savvy buyers demand. With tremendous interior and exterior storage, and an amazingly fun to drive Freightliner M2 chassis, the Verona makes getting there half the fun. As comfortable as it is beautiful, you'll want to go further and stay longer every time you hit the road.



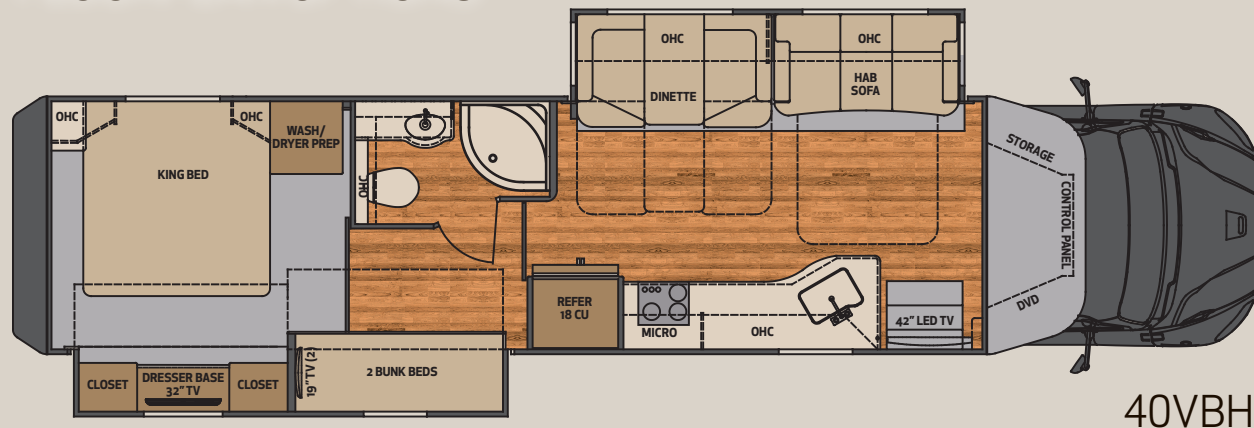
C. 40VBH Cafe Decor



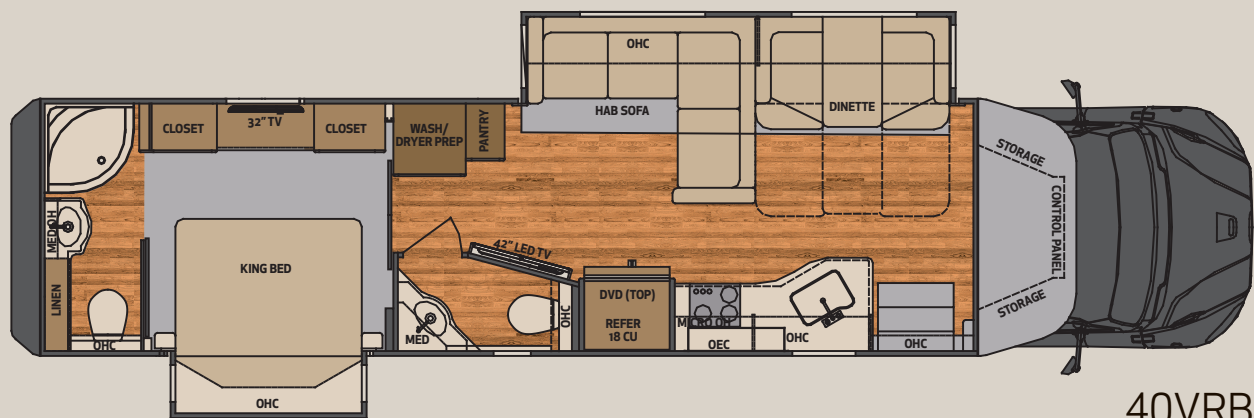
## BED AND BATH



## FLOORPLAN OPTIONS



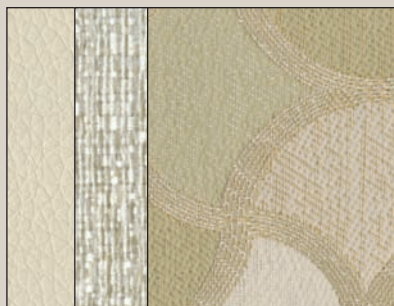
40VBH



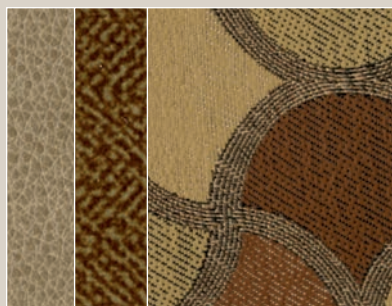
40VRB

- A. 40VBH with standard 72" x 75" King Size bed. Optional stackable washer/dryer shown.
- B. 40VRB Master Suite with standard 72" x 75" King Size bed.
- C. 40VBH with 30" x 80" quick-removable bunk beds, shown with optional 19" DVD monitors.

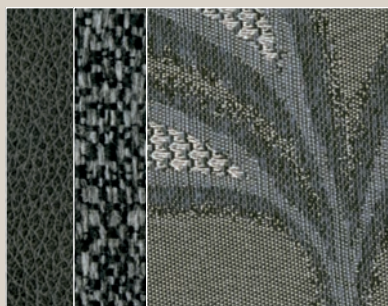
Overall Length	40' 2"
Exterior Width	99 - 1/4"
Wheelbase	309"
Overall Exterior Height	12' 8"
(Includes 15,000 BTU Roof Air Conditioners)	
Interior Height	7' 0"
Fuel Capacity	100 Gallons
Fresh Water	150 Gallons
Grey Water	75 Gallons
Black Water	75 Gallons
LPG Capacity	24.2 Gallons/80 lbs.



CARAMEL DECOR



CAFE DECOR



TWILIGHT DECOR



# STANDARD AND OPTIONAL FEATURES

## Construction

- Smooth High Gloss One Piece Fiberglass Wall Surface
- 2" Vacuum Laminated Sidewalls w/ Welded Tubular Aluminum Framing
- 1.5" High Density Foam Insulation in Sidewalls & Roof
- Two piece Molded Rear Cap and Bumper System
- Welded Tubular Aluminum roof truss system with framed cutouts
- One Piece Crowned Fiberglass Roof Surface
- "Super Sandwich" floor construction consisting of:
  - (1) 3/4" Fir Plywood Deck over 2 x 4 Wood-framed Residential Floor
  - (2) 2" Welded Tubular Steel Floor Joist system
  - (3) 3" Steel Longitudinal Floor Beams
- 3.5" Premium Grade Roxul Sound Deadening and Thermal Insulation in Floor
- Galvanized Steel Vapor Barrier

## Exterior Features

- Full Body Paint Package with Clearcoat
- LED Brake and Turn Lights
- Carefree of Colorado Lateral Arm Awning w/ LED Lights
- Aluminum Clad Slide Toppers
- Keyless Entry System
- Frameless Tinted Windows with Tilt-opening Design and Screens
- Exterior Entertainment Ctr. w/ LG 32" LED TV, AM/FM/CD/DVD Player
- Fully Automatic 4 Point Hydraulic Leveling
- 20,000 lb. Hitch
- 7 way Flat Pin Tow Connection

## Entertainment Systems

- Premium Touch Screen Dash Radio/CD/DVD with Integrated Color Monitor
- Color Side and Rear View Cameras
- Integrated GPS with RV Navigation Maps
- LG Home Theater CD/BluRay/AM/FM/ Stereo
- LG 42" LED TV in Living Area

- LG 32" LED TV in Bedroom w/ BluRay Player
- In-Motion Satellite System

## Interior Features and Décor

- Ultra-Soft Touch Furniture Package, Sofa, Dinette and Driver/Passenger Seats
- Ultra-Soft Touch Sofa with Queen Size Slide-a-bed Sleeper
- Solid Maple Hardwood Cabinets, Maple Hardwood Doors with Hidden Hinges
- Soft close full extension ball bearing drawer guides
- Polished Solid Surface Countertops and Dinette Table
- Stonecast Deep Bowl Kitchen Sink with Solid Surface Covers
- Armstrong Luxe Plank LVT Flooring (Kitchen, Hallway, and Bath)
- Energy Efficient LED Flush Mount Ceiling Lighting Throughout
- LED Floor Level Lighting Throughout
- King Size Pillow top Mattress, 72" x 75"
- Full Length Wardrobe with removable bottom shelf
- 30" x 80" Bunk Beds with privacy curtains (40VBH)
- Lighted Entry Step area with Rubber Step Treads and Under-step Storage

## Electrical Systems

- 8KW Onan Quiet Diesel Generator with Auto Generator Start System
- 2,000 Watt Inverter
- (3) Group 27 AGM House Batteries
- 50 Amp Electrical Panel
- Deluxe LED Lighting System
- 12V Holding Tank Heaters on Grey & Black Tanks

## Bath Systems & Amenities

- Deluxe Hardwood Vanity, Medicine & Linen Storage Cabinets
- Color Coordinated Fiberglass Shower w/ Glass Door
- Shower Skylight
- Whole House Water Filter System
- Black Tank Flush System
- Porcelain Electric Macerator Toilet

## Chassis and Cab

- Freightliner M2, 34,300 GVWR, 60,000 GCWR
- Cummins ISL 8.9L 350HP, 1,000 lb.ft. Torque
- Allison TRV3200 Electronic Six Speed Transmission
- Front 295/75R22.5 Radial Tires, 16 Ply
- Rear 295/75R22.5 Radial Tires, 14 Ply
- Accuride Polished Aluminum Wheels with Center Caps
- Airliner Rear Air Suspension
- Air brakes with 4 wheel ABS
- Cummins C-Brake with Dash Switch
- Dual 50 Gallon Aluminum Fuel Tanks, Total of 100 Gallon Capacity; 6 Gallon DEF Tank
- Air Ride Driver and Passenger Seat Pedestals
- Power Windows and Door Locks
- Power/Heated Remote Control Mirrors
- Tilt & Telescoping Steering Wheel
- Premium Freightliner Heat/Sound Insulation

## Appliances & Utilities

- 18 cu. ft. Stainless Steel French Door Refer w/ Ice maker
- Recessed LP Sealed 3 Burner Stainless Steel Cooktop
- Stainless Steel Convection Microwave Oven
- 10 Gallon LP/110V Electric Water Heater
- 40,000 BTU LP Gas Furnace with Electronic Ignition
- (2) 15,000 BTU Low Profile Roof A/C with Heat Pumps & Chill Grill

## Popular Options

- Stackable Washer/Dryer
- 60" x 75" Queen Size Bed
- Table with Free Standing Dinette Chairs
- Pair of DVD Monitors (40VBH Model only)
- Dometic 13 cu. ft. LP/110V Refrigerator with Ice maker
- Power Retract Water Hose Reel
- Exterior Quick Disconnect LP line (For Gas Grill) with Locking Door
- Armstrong Luxe Plank Flooring in Bedroom in lieu of Standard Carpeting



your

DESIGNED FOR LIFE

# EXTERIOR PAINT OPTIONS



MERLOT



TRUFFLE



ONYX

YOUR RENEGADE DEALER:

Due to continued product improvement and changes in suppliers, design, and production; equipment, colors, material specifications, prices and model availability are subject to change without notice. Some photography may show optional items. Kibbi manufacturers motorhomes and trailers of varying sizes which may or may not be legal in all states; it is the responsibility of the owner to determine the legal lengths in the state of operation.