



CAR HAULERS
ALUMINUMTRAILER.COM

THE ATC EXPERIENCE

ATC has a solid reputation built on our Car Haulers. We've spent years developing and fine tuning the details and features of our current lineup of vehicle transports, and our full lineup of products are created to meet the needs of every car hauling customer. Our product line begins with the Raven Car Hauler - an economical, feature rich trailer, perfect for the weekend racer - and extends to our Quest bumper pull and gooseneck packages that are upgradable using a list of over 1,000 options. If our packages aren't exactly what you're looking for, we can work with you to design your very own, one-of-a-

kind custom trailer. Whatever your driving stripe, ATC can provide you with quality craftsmanship, industry leading customer service, and trailer with fit & finish that is second to none. At ATC we believe that your car hauler should be no less attractive and functional than the car you're hauling.

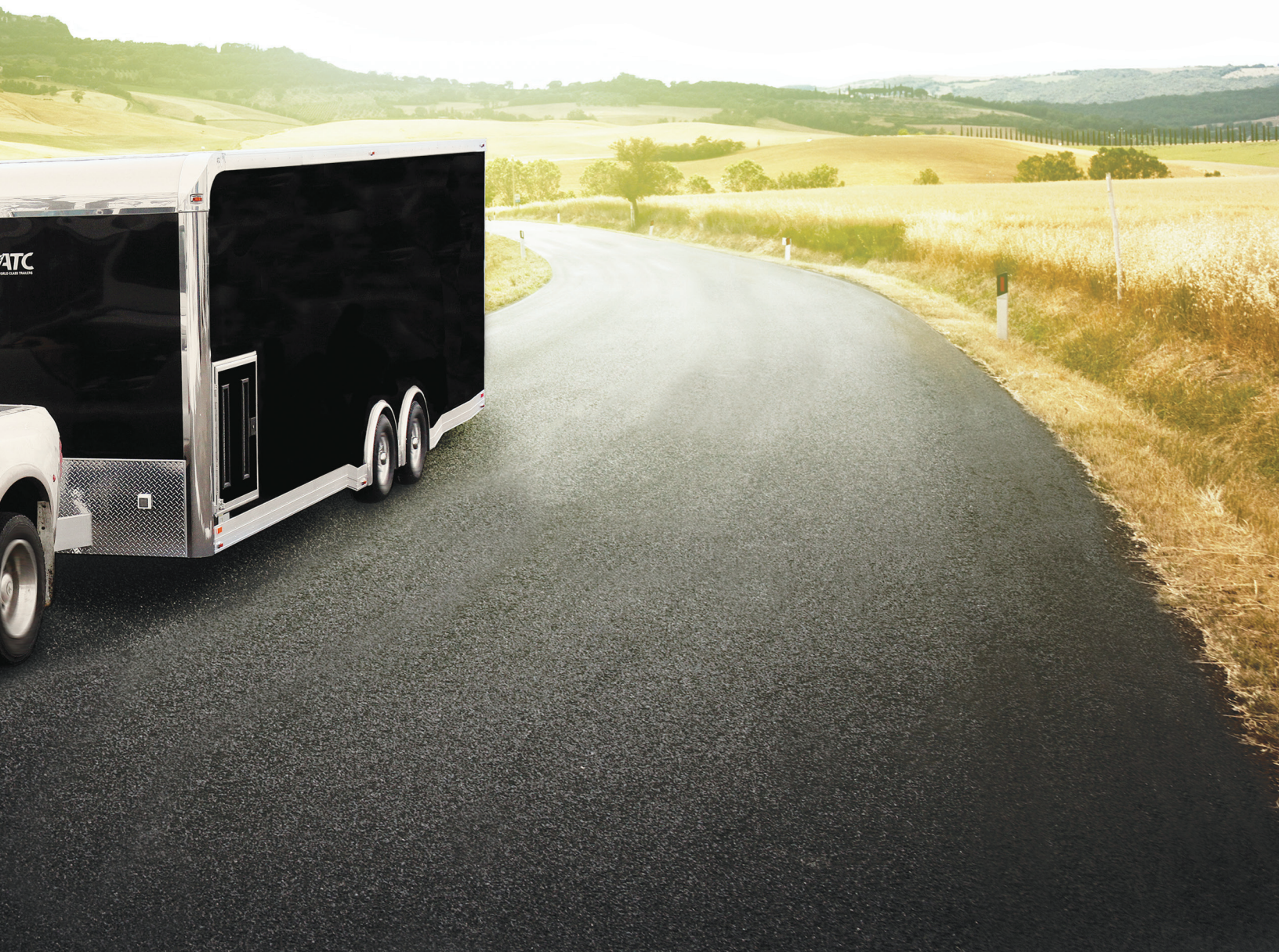


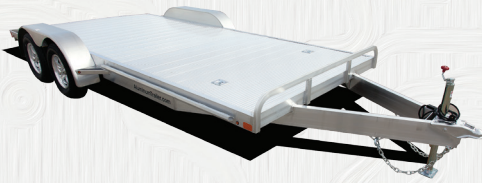
MADE IN THE USA

We believe that one, sole company should be responsible for their product. In today's world of outsourcing everything from material production, assembly, installation and even customer service, we build virtually every aspect of our trailers. From selection and procurement of raw materials to frame assembly; from interior and exterior cladding to plumbing and electrical system installation; from door fabrication and installation to custom cabinetry and millwork; every component is either produced or assembled under one roof in our Indiana facility.

ALUMINUM & STEEL

Our high-end standard and custom car haulers can be built in either aluminum or steel, your choice. We are one of the few trailer manufacturers who can make that claim. We will work with you to identify which construction material best suits your needs.





Open Car Hauler

Raven Car Hauler

Raven Car Hauler Plus

FRAME

FULL PERIMETER ALUMINUM FRAME
 102" EXTERIOR WIDTH
 82" DECK WIDTH
 ALL TUBE CONSTRUCTION
 BEAVERTAIL
 FLAT FRONT DESIGN
 6" TALL FRONT RAIL
 TORSION AXLES - EZ LUBE - WITH BRAKES
 ALUMINUM EXTERIOR FENDERS
 5000# ZINC TOP WIND JACK
 7-WAY PLUG
 2-5/16" COUPLER
 ST205/75R15/LRC RADIAL ON GREY MOD

DECK

EXTRUDED ALUMINUM FLOOR
 (4) 5000# RECESSED FLOOR D-RINGS

EXTERIOR

(4) STEP/FENDER SUPPORTS WITH TRACTION TAPE
 (2) 84" RAMPS
 IN-FRAME LOCKING RAMP STORAGE
 FULL PERIMETER SIDE LOADING AND TIE-DOWN RAIL
 LED CLEARANCE & BRAKE LIGHTS

FRAME

SPRING AXLES, STD LUBE, W/ BRAKES
 6.5' INTERIOR HEIGHT
 16" O/C FLOOR CROSSMEMBERS
 24" O/C ROOF CROSSMEMBERS
 24" O/C WALL CROSSMEMBERS

EXTERIOR

BRUSHED ALUMINUM CAST CORNERS
 STAINLESS STEEL VERTICALS & TOP RADIUS
 SCREWS ON SEAMS & TRIM
 REAR RAMP DOOR WITH TRANSITION FLAP - 4000#

INTERIOR

3/4" ADVANTECH FLOOR
 3/8" PLYWOOD WALLS
 (4) RECESSED 5000# D-RINGS

FRAME

UPGRADE TO TORSION AXLES
 7' INTERIOR HEIGHT
 16" O/C FLOOR CROSSMEMBERS
 16" O/C ROOF CROSSMEMBERS
 16" O/C WALL CROSSMEMBERS
 BEAVERTAIL

EXTERIOR

BRUSHED ALUMINUM CAST CORNERS
 STAINLESS STEEL VERTICALS & TOP RADIUS
 SCREWLESS EXTERIOR
 REAR RAMP DOOR WITH TRANSITION FLAP - 4000#

INTERIOR

BLACK POLYBEAD FLOOR
 BLACK POLYBEAD RAMP AND TRANSITION FLAP
 WHITE VINYL WALLS & CEILING WITH H-MOLDING
 SPRING ASSIST COVER
 8' UPPER CABINET - POLAR WHITE
 STRAIGHT BASE LOWER CABINET - POLAR WHITE
 (4) RECESSED 5000# D-RINGS

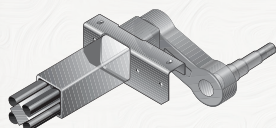
ELECTRICAL

30 AMP BREAKER BOX
 25' SHORE CORD & CABLE HATCH
 (3) INTERIOR 120V RECEPES
 (1) EXTERIOR 120V RECEPTE
 (3) 48" FLUORESCENT LIGHTS
 BRACE & WIRE FOR FUTURE A/C

THE RAVEN CAR HAULER PLUS IS AVAILABLE IN LENGTHS OF 24' AND 28'. THE FEATURES LISTED ABOVE ARE FOR THE 24' MODEL. THE 28' MODEL COMES WITH UPGRADES INCLUDING A 48" WIDE SIDE DOOR, A 36"X36" GENERATOR DOOR, RADIAL TIRES ON ALUMINUM WHEELS AND AN L-BASE LOWER CABINET.



DEXTER AXLE



Our Open, Raven Plus and Quest Car Hauler models come standard with Dexter Torflex Axles, the leader in the trailer industry in axle quality and durability.



Quest CH 205

FRAME

BEAVERTAIL
7' INTERIOR HEIGHT
REAR SKID PLATES

EXTERIOR

UPGRADE TO 36" SIDE DOOR - 405 SERIES
REAR RAMP DOOR WITH CONT. HINGE - 4000#
REAR TRANSITION FLAP
ALUMINUM BAR LOCKS
STAINLESS STEEL HASPS
SCREWLESS EXTERIOR
POLISHED CAST CORNERS
STAINLESS STEEL TOP RADIUS AND VERTICALS
4" UPPER RUB RAIL TRIM
7" LOWER RUB RAIL TRIM
PREP FOR FUTURE STEP
ALUMINUM WHEELS

INTERIOR

BLACK COIN TPO FLOOR
BLACK COIN TPO RAMP AND TRANSITION FLAP
SCREWLESS ALUMINUM WALLS AND CEILING
(4) 5000# RECESSED FLOOR D-RINGS
8' LOWER CABINET
8' UPPER CABINET

ELECTRICAL

30 AMP BREAKER BOX WITH MOTORBASE PLUG
25' SHORE CORD & MOTORBASE
(1) EXTERIOR GFI PROTECTED RECEPT
(3) INTERIOR GFI PROTECTED RECEPTS
(3) 48" RECESSED FLUORESCENT LIGHTS
2ND SET OF L.E.D. BRAKE LIGHTS
BRACE AND WIRE FOR FUTURE A/C



Quest CH 305

FRAME

BEAVERTAIL
7' INTERIOR HEIGHT
12" EXTENDED TONGUE
PERIMETER SKIRTING WITH FENDERETTES
REAR SKID PLATES

EXTERIOR

UPGRADE TO 36" SIDE DOOR - 405 SERIES
FMVSS LOCK FOR SIDE DOOR
REAR RAMP DOOR WITH CONT. HINGE - 4000#
REAR TRANSITION FLAP
STAINLESS STEEL REAR PADDLE LATCHES
SCREWLESS EXTERIOR
POLISHED CAST CORNERS
STAINLESS STEEL TOP RADIUS AND VERTICALS
STAINLESS STEEL REAR HEADER
4" UPPER RUB RAIL TRIM
7" LOWER RUB RAIL TRIM
ALUMINUM SLIDE IN/OUT STEP
ALUMINUM WHEELS

INTERIOR

BLACK COIN TPO FLOOR
BLACK COIN TPO RAMP AND TRANSITION FLAP
SCREWLESS ALUMINUM WALLS AND CEILING
(4) 5000# RECESSED FLOOR D-RINGS
8' LOWER CABINET
8' UPPER CABINET WITH LOWER RADIUS EDGE
TOP HINGED CABINETRY WITH GAS STRUTS

ELECTRICAL

50 AMP BREAKER BOX/60 AMP CONVERTER UNIT
25' SHORE CORD & MOTORBASE
12V FUSE PANEL
BATTERY - 12V DEEP CYCLE (685 CA, 550 CCA)
MANUAL POWER CUT OFF SWITCH
(1) EXTERIOR GFI PROTECTED RECEPT
(3) INTERIOR GFI PROTECTED RECEPTS
(4) 12V 18" RECESSED L.E.D. LIGHTS
PAIR OF 3-WAY SWITCHES FOR 18" L.E.D. LIGHTS
(2) RECESSED EXTERIOR LED SCENE LIGHTS
2ND SET OF L.E.D. BRAKE LIGHTS
BRACE AND WIRE FOR FUTURE A/C



Quest CH 405

FRAME

BEAVERTAIL
7' INTERIOR HEIGHT
12" EXTENDED TONGUE
PERIMETER SKIRTING WITH FENDERETTES
REAR SKID PLATES

EXTERIOR

UPGRADE TO 36" SIDE DOOR - 405 SERIES
FMVSS LOCK FOR SIDE DOOR
REAR RAMP DOOR WITH CONTINUOUS HINGE - 4000#
REAR TRANSITION FLAP
STAINLESS STEEL REAR PADDLE LATCHES
.040 EXTERIOR ALUMINUM - SCREWLESS
POLISHED CAST CORNERS
STAINLESS STEEL TOP RADIUS AND VERTICALS
STAINLESS STEEL REAR HEADER
COLOR MATCHED REAR SPOILER WITH (3) L.E.D. LIGHTS
4" UPPER RUB RAIL TRIM
7" LOWER RUB RAIL TRIM
14" MANUAL ROOF VENT
ALUMINUM SLIDE IN/OUT STEP
ALUMINUM WHEELS
AWNING RAIL INSTALLED

INTERIOR

EXTRUDED ALUMINUM FLOOR
EXTRUDED ALUMINUM RAMP AND TRANSITION FLAP
INSULATED WALLS AND CEILING - 1" E.P.S.
SCREWLESS ALUMINUM WALLS AND CEILING
(4) 6000# RECESSED FLOOR SWIVEL D-RINGS
8' LOWER CABINET
8' UPPER CABINET WITH LOWER RADIUS EDGE
(2) SINGLE DRAWER UNITS INTEGRATED IN LOW CABINET
ALUMINUM DRESSER CLOSET - 1/2 HEIGHT
TOP HINGED CABINETRY WITH GAS STRUTS ON DOORS
IN-FLOOR SPARE TIRE COMPARTMENT

ELECTRICAL

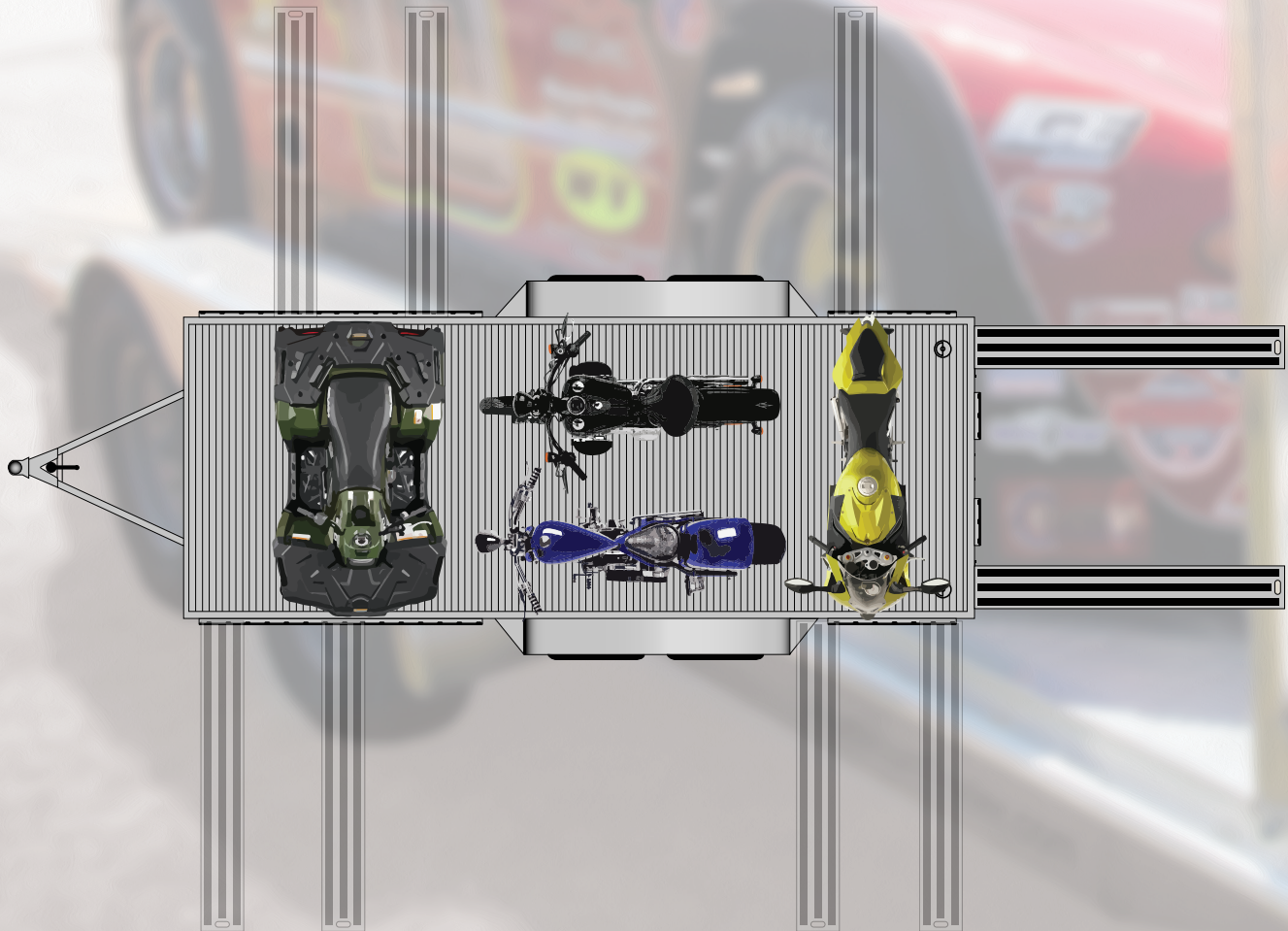
50 AMP BREAKER BOX/60 AMP CONVERTER COMBO UNIT
25' SHORE CORD & MOTORBASE
12V FUSE PANEL
BATTERY - 12V DEEP CYCLE (685 CA, 550 CCA)
MANUAL POWER CUT OFF SWITCH
(1) EXTERIOR GFI PROTECTED RECEPT
(3) INTERIOR GFI PROTECTED RECEPTS
(4) 12V 18" RECESSED L.E.D. LIGHTS
PAIR 3-WAY SWITCHES 18" L.E.D. LIGHTS - FRONT & REAR
(3) PUCK LIGHTS - L.E.D. UNDER UPPER CABINET
(2) RECESSED EXTERIOR SCENE LIGHTS
2ND SET OF L.E.D. BRAKE LIGHTS
BRACE AND WIRE FOR FUTURE A/C

QUEST CAR HAULER PACKAGES ARE ALSO AVAILABLE IN GOOSENECK MODELS

ATC OPEN CAR HAULER

Place Your Ramps Anywhere Tie Down Anywhere

The ATC Open Car Hauler was designed to haul your most prized possession, your car. But it can be used for more than that. The ATC OCH Side Rail allows you to move the trailer ramps anywhere on the side, so you can side load toys like motorcycles and ATV's. Use the same side rail to strap them down, and you're good to go for a weekend trip.





Tire Rack

The ATC Open Car Hauler Tire Rack is durable enough to handle the continual work load of an avid racer. The 2" x 2" tubal aluminum frame securely holds a full rack of race tires for a cross country trip to your favorite track. Wedge a partial load of tires to the side with the tire rack clamp included with purchase of the rack.



Air Dam/Gravel Guard

The sleek looking ATC Air Dam/Gravel Guard protects your car from loose debris on the highway. Its slight curvature makes it aerodynamic, its slim profile maximizes the deck space for the car and other cargo, and its mill finish gives it a clean look.



Detachable Winch Platform

The ATC Open Car Hauler Detachable Winch Mount keeps your winch off the deck of your trailer, maximizing deck space for the car and other cargo. The mount can easily be removed by pulling a pin, allowing for easy storage of the winch away from snow, rain and theft. It's made of durable steel with a protective powder coat and it's rated for a 5000 lb winch.





Raven Car Hauler Plus

FRAME

TORSION AXLES

7' INTERIOR HEIGHT

16" O/C FLOOR CROSSMEMBERS

16" O/C ROOF CROSSMEMBERS

16" O/C WALL CROSSMEMBERS

BEAVERTAIL

EXTERIOR

BRUSHED ALUMINUM CAST CORNERS

STAINLESS STEEL VERTICALS & TOP RADIUS

SCREWLESS EXTERIOR

REAR RAMP DOOR WITH TRANSITION FLAP - 4000#

INTERIOR

BLACK POLYBEAD FLOOR

BLACK POLYBEAD RAMP AND TRANSITION FLAP

WHITE VINYL WALLS & CEILING WITH H-MOLDING

SPRING ASSIST COVER

8' UPPER CABINET - POLAR WHITE

STRAIGHT BASE LOWER CABINET - POLAR WHITE

(4) RECESSED 5000# D-RINGS

ELECTRICAL

30 AMP BREAKER BOX

25' SHORE CORD & CABLE HATCH

(3) INTERIOR 120V RECEPES

(1) EXTERIOR 120V RECEPTE

(3) 48" FLUORESCENT LIGHTS

BRACE & WIRE FOR FUTURE A/C

THE RAVEN CAR HAULER PLUS IS AVAILABLE IN LENGTHS OF 24' AND 28'. THE FEATURES LISTED ABOVE AND THE PHOTO ARE OF THE 24' MODEL. THE 28' MODEL COMES WITH UPGRADES INCLUDING A 48" WIDE SIDE DOOR, A 36"X36" GENERATOR DOOR, RADIAL TIRES ON ALUMINUM WHEELS AND AN L-BASE LOWER CABINET.



AluminumTrailer.com

FATC
WORLD CLASS TRAILERS

QUEST
GH 205

Quest CH 205



FRAME

- BEAVERTAIL
- 7' INTERIOR HEIGHT
- REAR SKID PLATES

EXTERIOR

- UPGRADE TO 36" SIDE DOOR - 405 SERIES
- REAR RAMP DOOR WITH CONTINUOUS HINGE - 4000#
- REAR TRANSITION FLAP
- ALUMINUM BAR LOCKS
- STAINLESS STEEL HASPS
- SCREWLESS EXTERIOR
- POLISHED CAST CORNERS
- STAINLESS STEEL TOP RADIUS AND VERTICALS
- 4" UPPER RUB RAIL TRIM
- 7" LOWER RUB RAIL TRIM
- PREP FOR FUTURE STEP
- ALUMINUM WHEELS

INTERIOR

- BLACK COIN TPO FLOOR
- BLACK COIN TPO RAMP AND TRANSITION FLAP
- SCREWLESS ALUMINUM WALLS AND CEILING
- (4) 5000# RECESSED FLOOR D-RINGS
- 8' LOWER CABINET
- 8' UPPER CABINET

ELECTRICAL

- 30 AMP BREAKER BOX WITH MOTORBASE PLUG
- 25' SHORE CORD & MOTORBASE
- (1) EXTERIOR GFI PROTECTED RECEPT
- (3) INTERIOR GFI PROTECTED RECEPTS
- (3) 48" RECESSED FLUORESCENT LIGHTS
- 2ND SET OF L.E.D. BRAKE LIGHTS
- BRACE AND WIRE FOR FUTURE A/C

Quest Gooseneck CH 305

FRAME

BEAVERTAIL
PERIMETER SKIRTING WITH FENDERETTES
INTEGRATED REVERSE BEAVERTAIL
REAR SKID PLATES

EXTERIOR

UPGRADE TO 36" SIDE DOOR - 405 SERIES
FMVSS LOCK FOR SIDE DOOR
REAR RAMP DOOR WITH CONTINUOUS HINGE - 4000#
REAR TRANSITION FLAP
STAINLESS STEEL REAR PADDLE LATCHES
.040 EXTERIOR ALUMINUM - SCREWLESS
POLISHED CAST CORNERS
STAINLESS STEEL TOP RADIUS AND VERTICALS
STAINLESS STEEL REAR HEADER
4" UPPER RUB RAIL TRIM
7" LOWER RUB RAIL TRIM
ALUMINUM SLIDE IN/OUT STEP
ALUMINUM WHEELS





ATC

ATC
WORLD CLASS TRAILERS

16 FEET

Quest Gooseneck CH 305

INTERIOR

- BLACK COIN TPO FLOOR
- BLACK COIN TPO RAMP AND TRANSITION FLAP
- GRAY CARPET IN RISER
- SCREWLESS ALUMINUM WALLS AND CEILING
- (4) 5000# RECESSED FLOOR D-RINGS
- 8' LOWER CABINET
- 8' UPPER CABINET WITH LOWER RADIUS EDGE
- (2) SINGLE 5" DRAWER UNITS INTEGRATED INTO LOWER CABINET
- TOP HINGED CABINETRY WITH GAS STRUTS ON DOORS

ELECTRICAL

- 50 AMP BREAKER BOX/60 AMP CONVERTER/12V FUSE PANEL
- EXTERIOR POWER INLET (MOTORBASE) WITH 25' SHORE CORD
- BATTERY - 12V DEEP CYCLE (685 CA, 550 CCA)
- MANUAL POWER CUT OFF SWITCH
- (1) EXTERIOR GFI PROTECTED RECEPT
- (3) INTERIOR GFI PROTECTED RECEPTS
- (4) 12V 18" RECESSED L.E.D. LIGHTS
- PAIR OF 3-WAY SWITCHES FOR 18" L.E.D. LIGHTS - FRONT & REAR
- (2) RECESSED LED SCENE LIGHTS WITH WALL SWITCH
- 2ND SET OF L.E.D. BRAKE LIGHTS
- BRACE AND WIRE FOR FUTURE A/C





Optional Escape Door



QUEST
CH 405

Quest CH 405

FRAME

- BEAVERTAIL
- 7' INTERIOR HEIGHT
- 12" EXTENDED TONGUE
- PERIMETER SKIRTING WITH FENDERETTES
- REAR SKID PLATES

EXTERIOR

- UPGRADE TO 36" SIDE DOOR - 405 SERIES
- FMVSS LOCK FOR SIDE DOOR
- REAR RAMP DOOR WITH CONTINUOUS HINGE - 4000# RATED
- REAR TRANSITION FLAP
- STAINLESS STEEL REAR PADDLE LATCHES
- .040 EXTERIOR ALUMINUM - SCREWLESS
- POLISHED CAST CORNERS
- STAINLESS STEEL TOP RADIUS AND VERTICALS
- STAINLESS STEEL REAR HEADER
- 6" COLOR MATCHED REAR SPOILER WITH (3) L.E.D. LIGHTS
- 4" UPPER RUB RAIL TRIM
- 7" LOWER RUB RAIL TRIM
- 14" MANUAL ROOF VENT
- ALUMINUM SLIDE IN/OUT STEP
- ALUMINUM WHEELS
- AWNING RAIL INSTALLED



Optional Stainless Steel Exterior

Quest CH 405

INTERIOR

- EXTRUDED ALUMINUM FLOOR
- EXTRUDED ALUMINUM RAMP AND TRANSITION FLAP
- INSULATED WALLS AND CEILING - 1" E.P.S.
- SCREWLESS ALUMINUM WALLS AND CEILING
- (4) 6000# RECESSED FLOOR SWIVEL D-RINGS
- 8' LOWER CABINET
- 8' UPPER CABINET WITH LOWER RADIUS EDGE
- (2) SINGLE 5" DRAWER UNITS INTEGRATED INTO LOWER CABINET
- ALUMINUM DRESSER CLOSET - 1/2 HEIGHT
- TOP HINGED CABINETRY WITH GAS STRUTS ON DOORS
- IN-FLOOR SPARE TIRE COMPARTMENT

ELECTRICAL

- 50 AMP BREAKER BOX/60 AMP CONVERTER COMBO UNIT
- 25' SHORE CORD & MOTORBASE
- 12V FUSE PANEL
- BATTERY - 12V DEEP CYCLE (685 CA, 550 CCA)
- MANUAL POWER CUT OFF SWITCH
- (1) EXTERIOR GFI PROTECTED RECEPT
- (3) INTERIOR GFI PROTECTED RECEPTS
- (4) 12V 18" RECESSED L.E.D. LIGHTS
- PAIR OF 3-WAY SWITCHES FOR 18" L.E.D. LIGHTS - FRONT & REAR
- (3) PUCK LIGHTS - 12V L.E.D. UNDER UPPER CABINET WITH WALL SWITCH
- (2) RECESSED LED SCENE LIGHTS WITH WALL SWITCH
- 2ND SET OF L.E.D. BRAKE LIGHTS
- BRACE AND WIRE FOR FUTURE A/C





STANDARD COLORS

Black

Medium Charcoal

Dark Metallic Gray

Light Pewter Metallic

Silver Frost

Brandywine

Victory Red

Bronze Metallic

Champagne Beige

Indigo Blue

Deep Green

Cargo Green

Emerald Green Metallic

Chevy Green

Polar White

PREMIUM COLORS

Metallic Grey

Hunter Red

Old Coke Red

Allied Orange

Schneider Orange

Penske Yellow

Ryder Yellow

New Pepsico Blue

Old Pepsico Blue

Deep Green Metallic

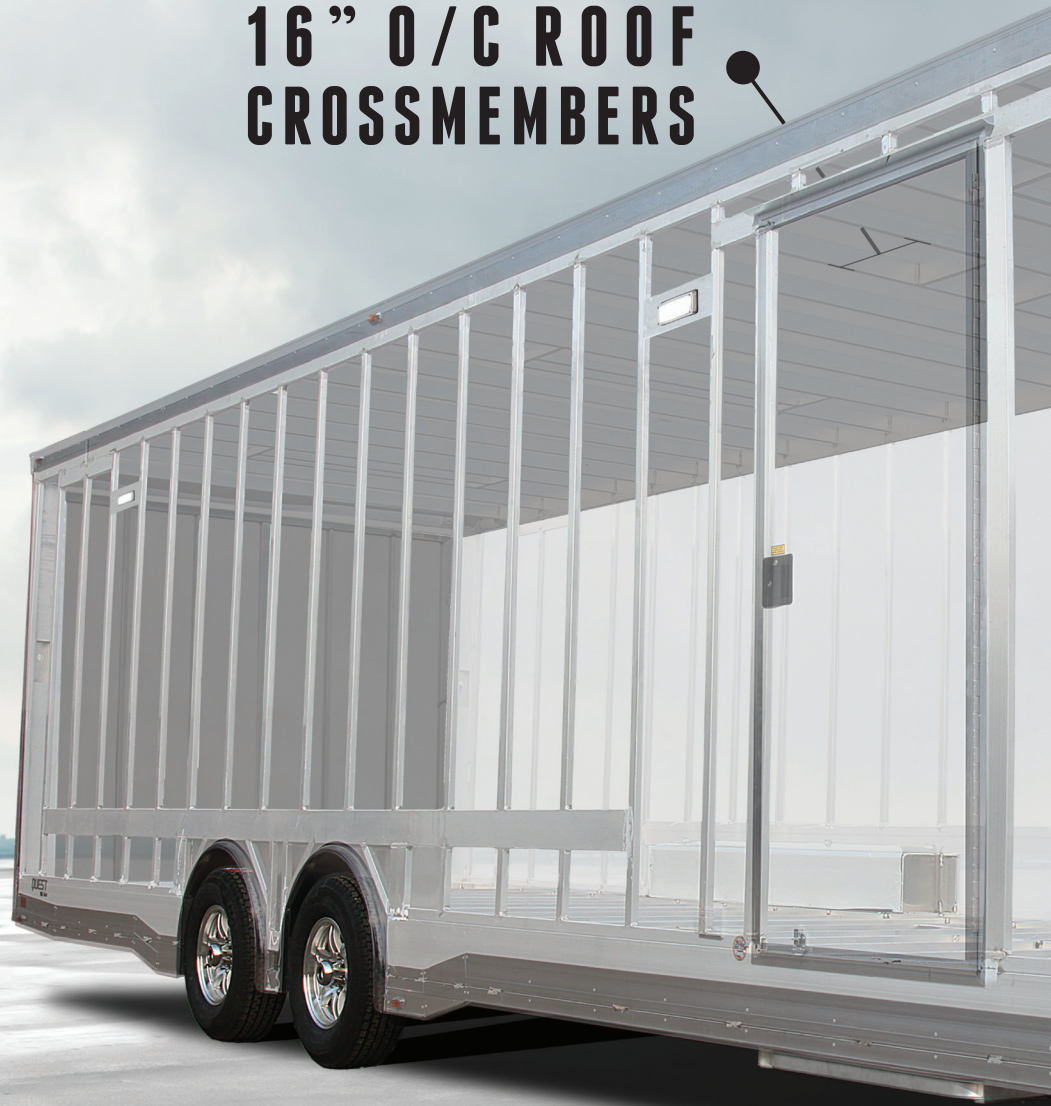


Upgrade an ATC trailer from a list of over 1,000 options. Here are just a few....



WORLD CLASS FRAME

**16" O/C ROOF
CROSSMEMBERS**



ALL WELDED, ALL TUBE CONSTRUCTION

FULL PERIMETER TUBE FRAME

COMPLETE ALUMINUM FRAME, NO STEEL SUB-STRUCTURE PAINTED SILVER

PROUDLY BACKED BY ATC'S 5 YEAR TRANSFERABLE WARRANTY

DESIGNED BY DEGREED ENGINEERS - TRUSTED BY RACERS FOR OVER 14 YEARS



**16" O/C WALL
CROSSMEMBERS**

**16" O/C FLOOR
CROSSMEMBERS**

QUEST

CAR HAULERS

AluminumTrailer.com



ATC Trailers

401 S. Williams St.
P.O. Box 396
Nappanee, IN 46550-0396
Toll Free: 1.877.441.2440



Due to continual improvement of ATC Inc. products, we reserve the right to change material, colors and specifications at any time without prior notification. Selected photos may show optional equipment, which are not part of a standard car hauler model. ATC Trailers assumes no responsibility for any error in type or print reproduction of specifications or color in the brochure. Portions of this catalog (flyer, etc) are copyrighted by Dexter Axle and were used with the expressed authority of Dexter Axle, but Dexter Axle is not responsible for the accuracy of the information contained herein.